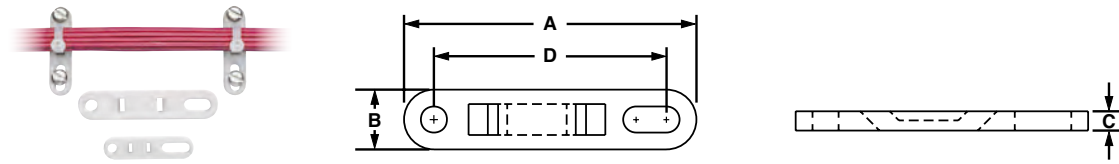




Cable Tie Plates

- Slotted mounting hole accommodates various fastener spacing
- Low profile design keeps bundle close to mounting surface
- For indoor use only
- Material: Nylon 6.6

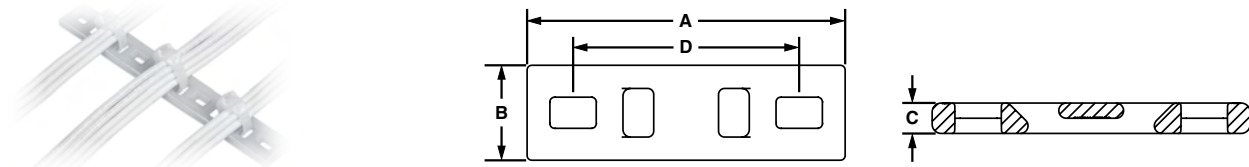


| Part Number | Used with Cable Ties‡ | Length A | | Width B | | Height C | | Hole Spacing D | | Color | Mil. Std. Part Number | Mounting Method | Std. Pkg. Qty. | Std. Ctn. Qty. |
|-------------|-----------------------|----------|------|---------|------|----------|-----|----------------|------|---------|-----------------------|-----------------|----------------|----------------|
| | | In. | mm | In. | mm | In. | mm | In. | mm | | | | | |
| TP2-C | M, I, S | 1.98 | 50.3 | 0.50 | 12.7 | 0.13 | 3.2 | 1.60 | 40.6 | Natural | MS3341-2-9 | #10 (M5) Screw | 100 | 1000 |
| TP4H-C | M, I, S, HS, LH, H | 3.08 | 78.2 | 0.62 | 15.7 | 0.20 | 5.2 | 2.50 | 63.5 | Natural | MS3341-2-9 | 1/4 (M6) Screw | 500 | 1000 |

‡Cable tie cross section sizes: M = Miniature, I = Intermediate, S = Standard, HS = Heavy-Standard, LH = Light-Heavy and H = Heavy.

Contour Multiple Tie Plates

- Designed for aerospace industry to minimize chance for abrasion
- Low profile design keeps bundle close to mounting surface
- For indoor use only
- Heat stabilized Nylon 6.6 material



| Part Number | No. of Bundles | Used with Cable Ties‡ | Length A | | Width B | | Height C | | Hole Spacing D | | Mounting Method | Mil. Std. Part Number | Std. Pkg. Qty. | Std. Ctn. Qty. |
|----------------|----------------|-----------------------|----------|-------|---------|------|----------|-----|----------------|-------|-----------------|-----------------------|----------------|----------------|
| | | | In. | mm | In. | mm | In. | mm | In. | mm | | | | |
| MTPC1H-E10-C39 | 1 | M, I, S, HS, LH, H | 2.09 | 53.1 | 0.63 | 16.0 | 0.20 | 5.2 | 1.5 | 38.1 | #10 (M5) Screw | — | 100 | 1000 |
| MTPC2H-E10-C39 | 2 | | 3.59 | 91.2 | 0.63 | 16.0 | 0.20 | 5.2 | 3.0 | 6.2 | #10 (M5) Screw | — | 100 | 1000 |
| MTPC3H-E10-C39 | 3 | | 5.09 | 129.3 | 0.63 | 16.0 | 0.20 | 5.2 | 4.50 | 114.3 | #10 (M5) Screw | — | 100 | 1000 |
| MTPC4H-E10-C39 | 4 | | 6.59 | 167.4 | 0.63 | 15.7 | 0.20 | 5.2 | 6.00 | 152.4 | #10 (M5) Screw | — | 100 | 1000 |
| MTPC5H-E10-C39 | 5 | | 8.09 | 205.5 | 0.63 | 16.0 | 0.20 | 5.2 | 7.50 | 190.5 | #10 (M5) Screw | — | 100 | 1000 |
| MTPC6H-E10-C39 | 6 | | 9.59 | 243.6 | 0.63 | 16.0 | 0.20 | 5.2 | 9.00 | 228.6 | #10 (M5) Screw | — | 100 | 1000 |

‡Cable tie cross section sizes: M = Miniature, I = Intermediate, S = Standard, HS = Heavy-Standard, LH = Light-Heavy and H = Heavy.